



# Samsung Galaxy Note 4 Display Assembly Replacement

Replace the display assembly on your Galaxy Note 4.

Written By: Sophia



# INTRODUCTION

Use this guide to replace the display assembly on your Galaxy Note 4.

[video: <https://www.youtube.com/watch?v=U59bW2xa5nY>]



## TOOLS:

- [Heat Gun](#) (1)
- [iFixit Opening Tools](#) (1)
- [Spudger](#) (1)
- [iFixit Opening Picks set of 6](#) (1)



## PARTS:

- [Galaxy Note 4 Screen](#) (1)
- [Galaxy Note 4 Display Adhesive](#) (1)
- [NuGlas Tempered Glass Screen Protector for Galaxy Note 4](#) (1)

## Step 1 — Display Assembly



- NOTE: It is suggested to remove the battery, S Pen, SD Card, and SIM card (if your phone uses a SIM card).
- Begin by heating the edges of the screen. The adhesive on the Galaxy Note 4 is weaker than on newer generations and will release easier, requiring less heat and prying.

## Step 2



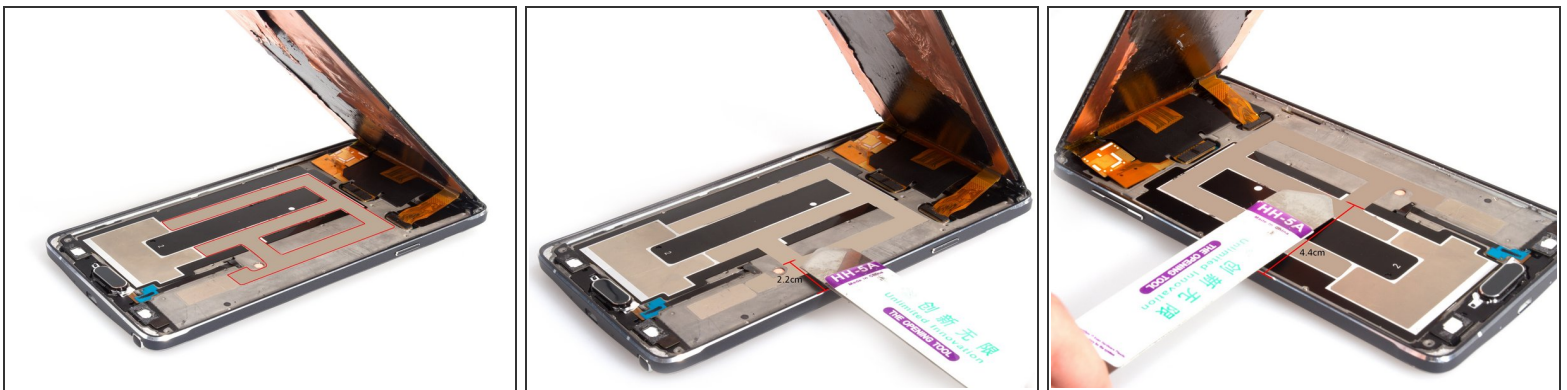
- Slowly work your way around the edges of the screen with a pry tool or pick.
- Work your way around the top and sides of the device, and very carefully approach the adhesive on the bottom of the phone. The Galaxy Note 4's touch-sensitive pads lay in the way of your opening picks and it is very easy to sever them.

## Step 3



- Insert the Jimmy underneath the LCD to cut the adhesive in the middle part. The adhesive is strong so make sure you are underneath the copper insulation before separating.

## Step 4



- Notice 1: The adhesive is in the red line.
- Notice 2: If you insert the spudger from right side, keep the length of the tool in less than 2.2cm, which is for avoiding damaging the home button flex.
- Notice 3: If you insert the spudger from left side, keep the length of the tool in less than 4.4cm for the same reason.

## Step 5



- Notice 4: Pay attention to the part with LCD screen flex. When you cut the adhesive, leave the top part alone to avoid damage the flex. But if it's the broken screen, you don't need to worry so much.

⚠ Be careful with the bottom side because there are the soft keys.

⚠ If the adhesive in the red line don't function any more when you place the new LCD screen, you can choose to use the 3M double side tape. It can help to fasten the new screen together with the LCD screen sticker.



## Step 6



- Release S Pen touch sensor film connector and LCD screen connector.

## Step 7



- Separate the LCD screen from the frame of the device.

To reassemble your device, follow these instructions in reverse order.